

# The Cutthroat Chronicles

Official Newsletter of the Snake River Cutthroats

October, 2019

## A Message from the President *by Matt Woodard*

Greetings to all you as fellow anglers. I'm serving as the chapter president for one year, because its important to me that this organization continues to function well. There are a number of us serving on the board that have been involved in the chapter for many years and I appreciate that long term commitment to our causes. I am excited that there are some new and younger faces getting involved and volunteering to keep this chapter strong and moving forward. We're not unlike a number of organizations where there is a dedicated core group that makes things work and good things happen because of that. With all of that said if you're interested in fisheries conservation and would like to think about serving on the board of directors you should call me or come to a board meeting which are the first Tuesday of the month at the Shilo Inn VIP Board Room.

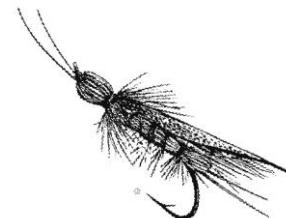
The Fall season in Idaho is a great place to be. We have surrounding us here in Idaho Falls some of the best fly-fishing water in the world. When the water levels drop rivers become more wadable and accessible. Water temps cool off and that's a single to fish that they need to bulk up for the cold winter months ahead. Most of the annoying flies and mosquitos are gone, and fall colors are starting to pop. It's a great time to be outside on some of your favorite water to enjoy what mother nature has given us.

I believe we have a great line up of great general meetings for all of you to come and enjoy. We have Todd Lanning from Henry's Fork Angler coming down from Island Park to start off the season as our first presentation of the year. I've known Todd personally for many years and he knows the surrounding area waters as well as anyone. You will be entertained, and some useful information will likely be shared on how to up your game when fishing the Henry's Fork or other local waters.

Stay tuned for some news on some outstanding conservation projects that Trout Unlimited and the Snake River Cutthroats are working on to improve our local fisheries

### UPCOMING EVENT

**Todd Lanning**  
**Wednesday, October 9<sup>th</sup>, 6 PM**  
**Shilo Inn, Idaho Falls**



SNAKE RIVER CUTTHROATS

1

[www.snakerivercutthroats.org](http://www.snakerivercutthroats.org)



**Wednesday, October 9<sup>th</sup>,  
2019**

**Todd Lanning on Fishing  
the Island Park Region**



Even though the Last Chance-Harriman reach of the Henry's Fork is just across the street, Henry's Fork Anglers (HFA) gets plenty of inquiries about fishing nearby Yellowstone National Park waters. And why not: the Park, you see, holds the best concentration of quality salmonid water in the country if not the world. Thus Mike, Chris, Todd and their HFA crew have taken time to visit these waters numerous times in order to develop a strategy for approaching Park waters. So we will learn the benefits of the HFA experience in fishing Yellowstone Park waters through Todd's presentation.

**Tie One On Returns to Offer  
Great Fly Tying and  
Good Times**



This great event returns on the third Tuesday of each month with the October 15<sup>th</sup> meeting. As in the past its location will be the same: Tap and Fill, South 1494 Milligan Road. Each meeting centers on fly tying begins at 7 PM and continues to around 8 PM. Only beer is served here, and more than a couple dozen different brands are offered. Food can be brought in to go with your choice of beer. Rob Knox is the guest tier during the October meeting. So plan to be there to enjoy Rob's skill at the tying vise and good times!

**Electronic Newsletters Available**

For those still receiving hard copies of the newsletter via standard mail, but would prefer to receive it via email, please send your email address to Carol Staples, our membership chair, at [casbas@cableone.net](mailto:casbas@cableone.net).

Fewer mailings mean more dollars for conservation proj  
The fish will appreciate your cost-saving efforts.



## It's Brown Trout Season

The major late spring-early summer mayfly and stonefly events that feed trout are over and killing frosts will soon end the major terrestrial insect availability for the same purpose. These events draw fly-fishers from far and wide to our regional waters. The same happens with the next major event in the fly-fisher mind, the autumn brown trout spawning migration in several of our rivers. These migrations begin each year as early as late August and last into December. Brown migrations happening in the South Fork, the lower Henry's Fork, the Beaverhead and Madison Rivers and Lewis River Channel between Lewis and Shoshone Lakes in Yellowstone Park are legendary. But other regional waters feature important brown trout migrations. Our main-stem Snake River, the Portneuf River, the Gardner River, the South Fork of the Madison River, Warm River, and Salt River as well as its tributaries flowing east out of Idaho are among these. The upper Willow Creek drainage featured such a migration which now is mostly deceased because of habitat degradation and lack of supplemental actions.

Browns are not native to this area, but are to the Eurasian continent and were introduced into eastern and mid-west American streams in the nineteenth century. As well as being a challenging sportfish, they are hardy and notably able to do well in negatively altered waters. They first came to our region around the turn into the twentieth century because well-healed anglers from eastern states and Europe applied political pressure on the old U.S. Fish & Wildlife Service to have them established and displace native salmonids (cutthroat trout, grayling, and whitefish) which they held in contempt. The first major introduction in eastern Idaho came about during the mid-twentieth century when the Idaho Department of Fish & Game (IDFG) introduced these to the upper Snake River drainage. In the early 1980's the, Snake River Cutthroats, teamed with IDFG to introduce brown trout into the Henry's Fork below Mesa Falls. Before this action their presence in the river was minimal. Eyed eggs were flown in from a Massachusetts fish hatchery to be incubated in the now closed Ashton hatchery during winter. In the spring the developing fry were transplanted to the Henry's Fork, Warm River, and Robinson Creek. Because of this early 1980s action they went on to thrive in these quality waters. The Idaho State record brown coming out of the Ashton Reservoir a few years ago is likely a progeny of this introduction. Now browns are major players in the regional salmonid world. Spawning mode browns move to special stream locations to complete this purpose. Such areas are of gravelly substrates which quality water flows over and through. Shallow to medium depth is preferred because sunlight helps fertilized egg incubation. Males arrive first to establish territories. Females arrive, and together they clear nests, called redds, in which to deposit and fertilize eggs. Trespassing competitors are battled, chased away, and spawning commences mostly under low light conditions. During daytime most redds are abandoned and spawning fish move to the best available cover. Redds are easily spotted as light colored patches in gravelly stream bottoms. Within them fertilized eggs gradually develop into fry which escape to further develop in sheltered aqueous areas. Redds can be considered "nurseries" for developing fry and should not be disturbed in any physical manner. On-stream ethics avoids walking on and not fishing over active redds or those holding developing eggs. Taking pictures of, then gently releasing browns migrating to spawn ensures a continuation of large, productive fish in the gene pool.

What is sound fly-fishing strategy for encountering these tackle-busting beauties? Taking advantage of their aggressive spawning mode nature is best. This is mostly accomplished through presenting large streamer fly patterns to fish holding in cover or migrating. Cover is usually deeper, slower water especially where structure makes an uneven bottom. Deeply undercut banks are another good location to target. Migration from such locations to spawning areas is usually performed during low-light conditions such as daybreak, twilight, or overcast or stormy conditions. Sink-tip lines with stout leaders presented through using medium weight rods makes up appropriate tackle. Streamers are an American original, and tied in various shapes, sizes, and colors. Some patterns are legendary, but presentation at the right time and place overwhelms their selection. Doing so could result in the best trout of the year or even of a lifetime.



## A Fly-Fisher Not to Be Forgotten



Cyril “Bing” Lempke was born in Minnesota during 1917. He arrived in east Idaho during 1929. Fishing had always been his main interest, but on observing it, fly-fishing fascinated him. Bing’s first fly-fishing trip was in that year with some flies gifted from a fly-fisher in his hometown of Idaho Falls. He caught 26 fish that day and was hooked on fly fishing. The Henry’s Fork and the Teton River became his favorite waters. During visits to these waters he traded fish for more flies, and on returning home would disassemble some to see how they were tied. Thus began his entry into fly-tying.

Bing served in the Merchant Marine during World War II then returned to East Idaho afterwards. He resumed fly-fishing and fly tying. His profession became pipefitting, and he worked for various private and governmental contractors. Meanwhile, fly-fishing and fly tying remained his passions. His fly tying skills developed over the years and by the 1970s he had created the extended body flies for which he would gain international acclaim. While doing so, he became a fly fisherman of the first order. His masterpieces included an the extended body Green Drake and Bing’s Hopper, but he could simulate any life form trout keyed on. He often said that the Last Chance-Harriman reach of the Henry’s Fork’s Green Drake hatch cost him a number of good jobs as he couldn’t resist its temptation every June. Locating at Last Chance at this time, he became an institution through passing on fly-fishing information and tying flies during the duration of the hatch.

He was chosen as the Federation of Fly Fishers' 1988 Buszek award winner for his contributions to fly-fishing and fly tying. Today an award in his honor is given by the Western Rocky Mountain Council of the Fly Fishers International to youth that best exhibits outstanding fly-tying skills and shares these with others. A memorial at the Last Chance parking area on the Henry’s Fork pays tribute to Bing who passed in February, 1991. He was a life-long companion of Rene Harrop, whose artistic work graces Bing’s memorial.



**Montana Pike Fishing**  
**by**  
**Dave Pace**

Club members have been traveling to Northern Saskatchewan to chase pike for a couple of decades now. Hoping for a closer alternative club members investigated Montana's Clearwater River Chain of Lakes over a long weekend May 17-21. The lakes are located along the Clearwater River near Seeley Lake about a 5 hour drive from Idaho Falls. The chain is composed of Salmon Lake, Seeley Lake, Lake Inez, Lake Alva, and finally Rainy Lake moving up the river. Montana Fish, Wildlife and Parks (MFWP) report that pike were illegally introduced and reside in all the lakes with higher fish numbers lower in the system and larger fish higher in the system. MFWP shared great disdain for the introduced Northern Pike which they felt are damaging their kokanee fishery. Little do they realize that fisherman like us traveled a reasonable distance just to chase water wolfs with no interest in the kokanee.

We traveled over on Friday May 17 with rainy weather pretty much the whole way. Mike Miller had arranged a rental house in Seeley Lake for a very reasonable rate so 7 club members stayed there and 9 others chose to camp out at Salmon Lake State Park. Over the trip we fished Salmon Lake, Seeley Lake and Inez Lake and even ventured over to Placid Lake west of the chain based on a campground hosts recommendations. Mother Nature wasn't really very nice and we struggled with the fishing in some rather cool temperatures but at least the rain pretty much quit on Saturday Morning. Seeley Lake seemed to have the best fishing and Danny Morse caught the best fish of the trip at 34 inches. Most of the fish caught ranged in the mid to upper 20 inch range. Our group did best with red and white flies around 5 inches in length.

The group shared war stories over a group fish fry Saturday night at the rental house and schemed their future plan of attack which ended up yielding pretty much the same fishing, some fish caught but overall pretty slow. The area is very beautiful with pine forests surrounding the area and national forest campgrounds at most of the lakes. The staff at the Seeley Lake ranger station warned about a large population of pleasure boaters on Seeley Lake in the peak of summer and suggested fishing it early or late in the season to avoid conflicts. Salmon Lake supposedly doesn't see near as much pressure nor Lake Inez. Lake Alva has a no wake restriction so sees very little traffic and Rainy Lake doesn't have a formal boat launch requiring carrying your craft 50 yards or so. Lake Inez, Alva and Rainy are all smaller lakes making a pontoon boat a reasonable option. Pontoons can also be launched at the Seeley Lake ranger station for fairly easy access to the inlet end of the lake.

Pike are a fun fish to chase, it is streamer fishing on steroids. The flies are large, easy to tie and fun to fish. An 8wt rod is typical with a 9wt being helpful if you want to try larger flies. Smaller 4-6 inch flies seemed more productive on our trip. If this kind of trip might interest you keep an eye out for a return trip next year with hopefully some better weather.



## Recipe of the Month: Another Fish Chowder

Here is a great recipe to “warm the cockles of your heart” during those cool, crisp evenings coming up for the next several months.

### Ingredients

- 1 medium onion, chopped
- 1 tablespoon butter
- 2 cups whole milk
- 1 cup ranch salad dressing
- 1 pound boneless trout fillets, skin removed
- 1 package (9 ounces) frozen broccoli cuts, thawed
- 1 cup cubed or shredded cheddar cheese
- 1 cup cubed or shredded Monterey Jack cheese
- 1/4 teaspoon garlic powder
- Paprika, optional

### Directions

- In a large skillet, saute onion in butter until tender. Transfer to a 3-qt. slow cooker; add the milk, dressing, fish, broccoli, cheeses and garlic powder.
- Cover and cook on high for 1-2 hours or until soup is bubbly and fish flakes easily with a fork. Sprinkle with paprika if desired.

### *Nutrition Facts*

1 cup: 554 calories, 43g fat (16g saturated fat), 107mg cholesterol, 655mg sodium, 10g carbohydrate (8g sugars, 2g fiber), 30g protein.

*Originally published as Trout Chowder in Taste of Home August/September 1998*

## Fly of the Month: Double Bunny

This is Scott Sanchez's best known streamer. Its variations won two Jackson Hole One-Fly contests back in the 1990's. Consider tying some for the upcoming brown trout migrations taking place in so many of our rivers.

Hook: Mustad 9672 or equivalent, size 2

Thread: Gray, 3/0

Weight: Lead free wire, 0.035-inch diameter on front half of shank

Body/wing: Two rabbit strips, hide sides opposing, darker on top, lighter on bottom

Lateral line: Pearl Flashabou tied in at mid shank

Eyes: Stick-on pair, 5/16-inch diameter

Adhesive for rabbit hide strips: Contact cement

Head cement/eye overcoat: Epoxy



### 2018-19 Calendar

Date	Activity
Tuesday, October 1 <sup>st</sup>	SRC Board Meeting, 6:30 PM, Shilo Inn
Wednesday, October 9 <sup>th</sup>	Membership Meeting, Guest Todd Lanning
Friday, October 11 <sup>th</sup>	Blackfoot River Outing
Saturday, October 12 <sup>th</sup>	Idaho State TU Council Meeting Idaho Falls, location TBA
Tuesday, October 15 <sup>th</sup>	First Tie One On Meeting, Tap & Fill, 7-8 PM
Wednesday, October 16 <sup>th</sup>	2020 EIFTE Organizing Meeting, Jimmy's 6 PM
Tuesday, November 5 <sup>th</sup>	SRC Board Meeting, 6:30 PM, Shilo Inn
Wednesday, November 13 <sup>th</sup>	Membership Meeting, Guest Kris Millgate
Tuesday, December 3 <sup>rd</sup>	SRC Board Meeting, 6:30 PM, Shilo Inn
Wednesday, December 11 <sup>th</sup> (Tentative)	Xmas Party, Sr. Citizen's Center, 6 PM
Tuesday, January 7 <sup>th</sup>	SRC Board Meeting, 6:30 PM, Shilo Inn
Wednesday, January 15 <sup>th</sup>	Membership Meeting, Guest Boots Allen

Note: all membership and board meetings are held at the Shilo Inn.

Board meetings are open to all members and are held in the VIP room.

General membership meetings are held in the Temple/River View rooms and are open to the public

**Snake River Cutthroats**  
291 Dale Drive  
Idaho Falls, ID 83402  
RETURN SERVICE REQUESTED

**NON-PROFIT STD**  
**US POSTAGE PAID**  
Idaho Falls, ID  
Permit no. 15

## ***Snake River Cutthroats***

### **Club Officers**

**President:** Matt Woodard (208-221-1353)  
**Past President:** Rory Cullen (208-419-8477)  
**Ex. Vice President:** TBA  
**VP Conservation:** Arn Berglund (208-569-2243)  
**Treasurer:** Jim Mathias (208-684-4200)  
**Secretary:** Joe Timchak (208-569-0630)

### **Senior Advisors**

**Gary Barnes**  
**Jimmy Gabettas**  
**Buck Goodrich**  
**Ron Hover**  
**Scott Long**  
**Dave Pace**  
**Bruce Staples**  
**Marvin Stucki**

### **Board of Directors**

**3 Yr Directors:** Andy Bosworth (207-713-3457), Brian King (530-310-0529), Terrance Scott ( 503-432-6953)  
**2 Yr Directors:** Kim Campbell (435-232-6608), Lee Morse (208-252-0703), Paul Voegeli (303-324-0104)  
**1 Yr Directors:** Wade Allen (208-390-3130), John Rivera (208-528-7997), Bob Starck (208-589-9339)

### **Committee Chairs**

**Membership:** Carol Staples (208-522-9242)  
**Historian/Newsletter:** Bruce Staples (208-522-9242)  
**Education:** Jeff Armstrong (208-522-7005)  
**Expo:** Scott Long (208-520-3750), Rory Cullen (208-419-8477)  
**Programs:** George Klomp (208-680-2762)/Bob Starck (208-589-9339)  
**Publicity:** Rob Knox (760-419-1682)  
**Outings:** Marv Stucki (208-589-9677)  
**Website:** Scott Long (520-3750), Rob Knox (760-419-1682), Tim Woodard (208-201-1669)  
**Youth:** Joe Timchak (208-569-0630)